

HIGH GROWTH JOBS IN FLORIDA

Fastest-Growing Occupations										
Filter by Florida Educational Level										
All Education Levels										
Select a Region										
Statewide										
Rank	Occupation Code	Occupation Title	2018 Employment	2026 Employment	Employment Growth	Employment Percent Growth	*Total Job Openings	Median Hourly Wage	FL Education Level	BLS Education Level
1	291071	Physician Assistants	5,719	7,835	2,116	37.0%	4,979	\$48.08	B	M
2	311011	Home Health Aides	28,233	38,481	10,248	36.3%	39,947	\$10.97	PS	HS
3	291171	Nurse Practitioners	9,665	12,893	3,228	33.4%	7,562	\$46.39	M+	M
4	399021	Personal Care Aides	28,325	36,677	8,352	29.5%	44,735	\$10.36	PS	HS
5	319092	Medical Assistants	55,271	70,624	15,353	27.8%	68,385	\$15.07	PS	PS
6	312021	Physical Therapist Assistants	5,594	7,126	1,532	27.4%	7,512	\$29.78	A	A
7	151132	Software Developers, Applications	37,467	47,389	9,922	26.5%	31,228	\$42.21	A	B
8	151122	Information Security Analysts	5,160	6,489	1,329	25.8%	4,423	\$39.73	PS	B
9	251071	Health Specialties Teachers, Postsecondary	11,332	14,218	2,886	25.5%	10,627	Null	M+	D
10	131161	Market Research Analysts and Marketing Specialists	30,594	37,889	7,295	23.8%	33,365	\$27.81	B	B

* Separations method, includes openings due to growth, labor force exits and occupational transfers; not comparable to replacement method

Florida Education Levels
 A: associate degree
 B: bachelor's degree
 HS: high school diploma or GED
 M+: master's, doctoral or professional degree
 NR: no formal educational credential required
 PS: postsecondary non-degree award
Additional BLS Education Levels
 D: doctoral or professional degree
 M: master's degree
 SC: some college, no degree

Occupations Gaining the Most New Jobs										
Statewide										
Rank	Occupation Code	Occupation Title	2018 Employment	2026 Employment	Employment Growth	Employment Percent Growth	*Total Job Openings	Median Hourly Wage	FL Education Level	BLS Education Level
1	353021	Combined Food Preparation and Serving Workers, Including Fast Food	243,489	285,501	42,012	17.3%	425,339	\$9.27	NR	NR
2	291141	Registered Nurses	194,140	223,904	29,764	15.3%	113,991	\$30.31	A	B
3	434051	Customer Service Representatives	248,574	272,938	24,364	9.8%	287,498	\$14.32	PS	HS
4	412031	Retail Salespersons	354,828	378,164	23,336	6.6%	441,640	\$10.53	HS	NR
5	353031	Writers and Waitresses	230,810	253,487	22,677	9.8%	385,764	\$10.15	NR	NR
6	372011	Janitors and Cleaners, Except Maids and Housekeeping Cleaners	133,972	151,277	17,305	12.9%	163,364	\$10.71	NR	NR
7	537062	Laborers and Freight, Stock, and Material Movers, Hand	135,853	151,936	16,083	11.8%	171,539	\$12.12	NR	NR
8	373011	Landscaping and Groundskeeping Workers	115,004	130,827	15,823	13.8%	131,983	\$11.88	NR	NR
9	319092	Medical Assistants	55,271	70,624	15,353	27.8%	68,385	\$15.07	PS	PS
10	352014	Cooks, Restaurant	107,889	122,507	14,618	13.6%	142,341	\$12.47	PS	NR

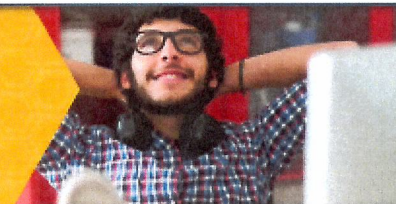
* Separations method, includes openings due to growth, labor force exits and occupational transfers; not comparable to replacement method

Florida Education Levels
 A: associate degree
 B: bachelor's degree
 HS: high school diploma or GED
 M+: master's, doctoral or professional degree
 NR: no formal educational credential required
 PS: postsecondary non-degree award
Additional BLS Education Levels
 D: doctoral or professional degree
 M: master's degree
 SC: some college, no degree

HIGH GROWTH JOBS IN FLORIDA

THE HARD FACTS

INFORMATION ABOUT OTHER POPULAR CAREER CHOICES



Below are the jobs that Gulf Coast residents most often state as their career goals. Compare the wages and available openings each year for these jobs with those of the other jobs in this magazine. You might find that you can pursue your skills, interests, values and passion through another pathway that might make more money and have more job openings.

PROFESSION	MEDIAN WAGE	EMPLOYMENT GROWTH	MINIMUM EDUCATION	ANNUAL AVERAGE JOB OPENINGS
Actors	\$20.92	18.50%	Some college, no degree	15
Dancers	\$8.65	18.2%	High school diploma or equivalent	10
Musicians and Singers	\$19.41	21.70%	No formal educational credential	35
Estheticians	\$11.13	26.80%	Postsecondary non-degree award	45
Photographers	\$16.48	12.1%	High school diploma or equivalent	60
Graphic Designers	\$20.79	20.10%	Bachelor's Degree	165
Architects, Except Landscape & Naval	\$36.91	24.70%	Bachelor's Degree	130
Cosmetologists ¹	\$9.77	24.70%	Postsecondary non-degree award	550
Chefs and Head Cooks	\$20.02	36.80%	High school diploma or equivalent	140
Athletes and Sports Competitors	NA	25.0%	High school diploma or equivalent	10
Travel Agents	\$17.73	17.10%	High school diploma or equivalent	40
Pediatricians	\$72.83	24.10%	Doctoral or professional degree	40
Home Health Aides	\$9.02	49.10%	No formal educational credential	745
Social Workers	\$39.83	22.90%	Bachelor's degree	30
Psychologists ²	\$30.04	23.30%	Doctoral or professional degree	80
Veterinarians	\$45.34	21.70%	Doctoral or professional degree	35
Zoologists and Wildlife Biologists	\$38.06	12.50%	Bachelor's Degree	0
Nanny	\$9.26	20.70%	High school diploma or equivalent	1,130
Interior Designer	\$25.81	24.80%	Bachelor's Degree	75

NOW APPLY IT TO YOUR LIFE..

Charting Your Career

Career	Salary Range	Education Level
Example: Teacher	\$55,000-\$72,000	Four-year college
1.		
2.		
3.		
4.		
5.		